

15 | 14 | 13 | 12 | 11 | 10 | 9 | 8 | 7 | 6 | 5 | 4 | 3 | 2 | 1

# CONSTRUCTION ~ PHASE 1

## NUHS SITE IMPROVEMENTS 2018

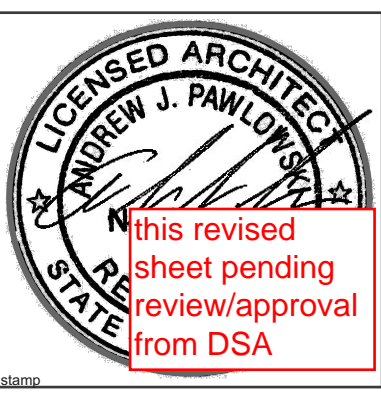
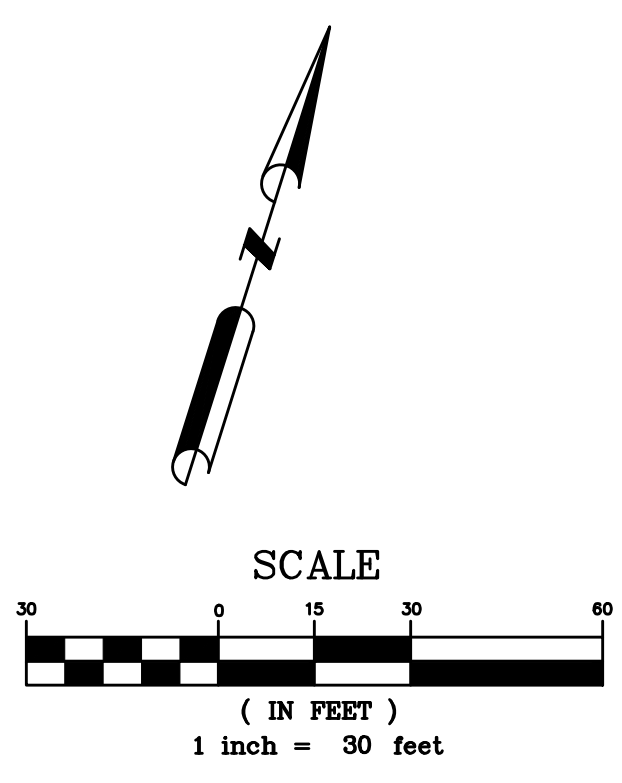
(START OF CONSTRUCTION THROUGH JUNE 8TH)

March 26 - June 8, 2018

BLDG. I - LANGUAGE

### LEGEND

- PHASE 1 CONSTRUCTION AREA
- - - - - CONSTRUCTION FENCE
- VEHICLE ACCESS
- PEDESTRIAN ACCESS



Revisions

© 2017 Siteline Architecture  
All rights reserved.  
These designs, plans and specifications are protected under federal copyright laws. Unauthorized duplication of these documents or the contents herein is in violation of federal copyright law.

**siteline architecture**  
Andrew J. Pawlowicz, Architect, LEED AP  
644 Zion Street  
Nevada City CA 95959  
530.478.9416 - F  
530.478.9416 - T  
www.sitelinearch.com

**SITE IMPROVEMENTS AND PAVING**  
for  
**NUJHSD - NEVADA UNION HIGH SCHOOL**  
11761 RIDGE ROAD, GRASS VALLEY, APN#95-250-01

drawn by	CRG
checked by	AJP
date	1/23/18
scale	AS NOTED
project number	66357-30
sheet	17-149

PHASE 1 -  
OVERALL SITE  
PLAN  
**A 1.0a**

15 | 14 | 13 | 12 | 11 | 10 | 9 | 8 | 7 | 6 | 5 | 4 | 3 | 2 | 1

\\sage\_238a\_28\_border\users\j\_l\_2011\_ah\workspace\Site\Site\Drawings\PLAN Files\NUHS\_site\_improvements\_17.dwg  
 NUHS\_site\_improvements\_17.dwg  
 Tuesday, January 23, 2018 11:41 AM  
 Volume: Site\Drawings\PLAN Files\NUHS\_site\_improvements\_17.dwg  
 Size: 14,411,440 bytes  
 Date: 1/23/2018 11:41 AM  
 User: j\_l\_2011\_ah